



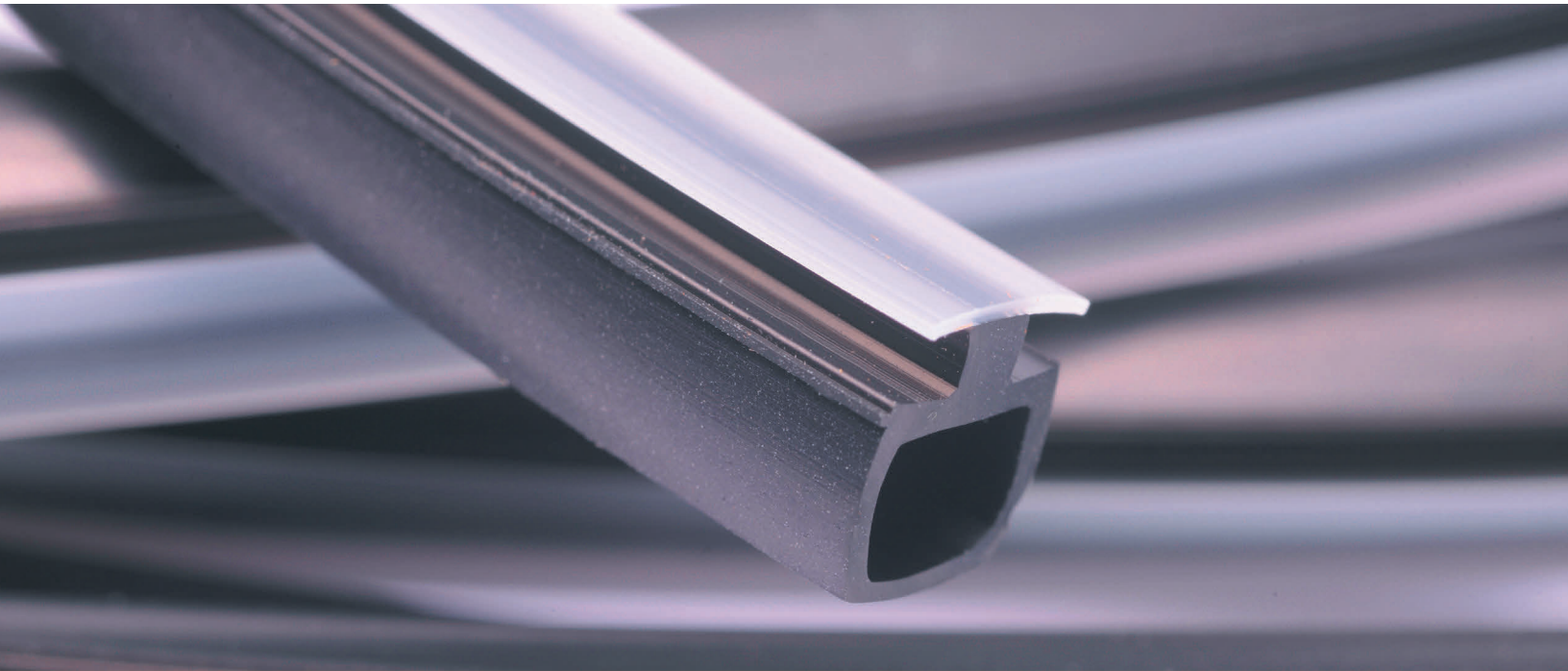
**COOPER STANDARD
INDUSTRIAL & SPECIALTY GROUP
WINDOW & DOOR PRODUCTS**

OUR INNOVATION. YOUR ADVANTAGE.

CREATE GREATER POSSIBILITIES

Whether it's a seal that withstands harsh environments or one that meets requirements of architectural design, Cooper Standard ISG creates greater possibilities for commercial and residential building applications.

With decades of experience, we offer the scale to serve the biggest names in the industry and the flexibility to make your unique vision a reality.



Our speed-to-market, range of production capabilities and ability to respond to evolving customer needs are key elements to building a long-term supplier relationship and providing superior sealing solutions.

From standard seals to custom-engineered solutions, Cooper Standard ISG has the expertise to meet our customers' needs for residential window and door or commercial storefront and curtain wall sealing applications.

VERSATILE SOLUTIONS

Industry Knowledge

Cooper Standard ISG works with you to solve problems. Our dedicated window and door group includes account managers, application & quality engineers and sales team members who walk you through the process from concept to reality.

Flexibility & Speed-to-Market

Our vertically-integrated supply chain allows us to move your solution to market faster. We are a single-source supplier of custom rubber and plastic extrusions and molded parts.

Our engineers and R&D team work closely with our material mixing and supply partners. Combined with our in-house tool and die capabilities, this allows us to develop solutions that fit your time frame.

Collaboration

Meeting our customers' toughest challenges takes more than advanced materials and design. It takes collaboration. Consulting with our application engineers about the end-use of your seal or gasket can help optimize its physical, mechanical and chemical resistance properties.

Quality

We are focused on quality and continuous improvement in order to deliver world-class products, processes and services. Our facilities adhere to ISO standards such as ISO 9001 w/Design and ISO 14001. ISO certifications vary by location. To learn more, contact an ISG technical consultant at www.cooperstandard-isg.com/contact.

MATERIALS MATTER

Cooper Standard ISG customers benefit from our extensive material development and testing programs to identify the right polymer for your end-use conditions.

As part of Cooper Standard, the Industrial and Specialty Group has access to advanced materials

science and innovations that add value for our customers.

We offer thermoset and thermoplastic materials, custom formulations and proprietary material platforms including our Fortrex™ family of materials.

Material Capabilities

Our material capabilities include flame-retardant materials, energy-saving EPDMs, closed-cell sponge and custom color rubber and plastic.

We develop and test materials to meet industry standards such as ASTM D1056 (sponge), ASTM D2000 (dense), ROHS, UL and AAMA requirements in Shore A & D durometers.

Thermosets Sponge & Dense

- EPDM
- Neoprene
- Nitrile
- Polyisoprene
- Polyurethane
- Silicone

Thermoplastics Rigid & Flexible

- EPP/EPE, LDPE,
- HDPE, PP
- FPVC, RPVC
- Nylon
- Polycarbonate
- TPO, TPU, TPV

FEATURED CAPABILITIES

From part design to improved installation methods, Cooper Standard ISG welcomes the challenge of developing new solutions. With problem solving experience in diverse industries, our engineers can transfer and customize technology and processes for new applications.



Continuous Corner Seals

Eliminate splices and gaps with materials and designs optimized for the right amount of compression and the flexibility to wrap a corner.

Multiple-Durometer Seals

Dual- and tri-extrusion materials create a profile with excellent compression set on the sealing side and a base that is easily inserted into a channel. Multiple-durometer profiles can be manufactured from EPDM, silicone and plastic.

Molded, Glued & Welded Corners

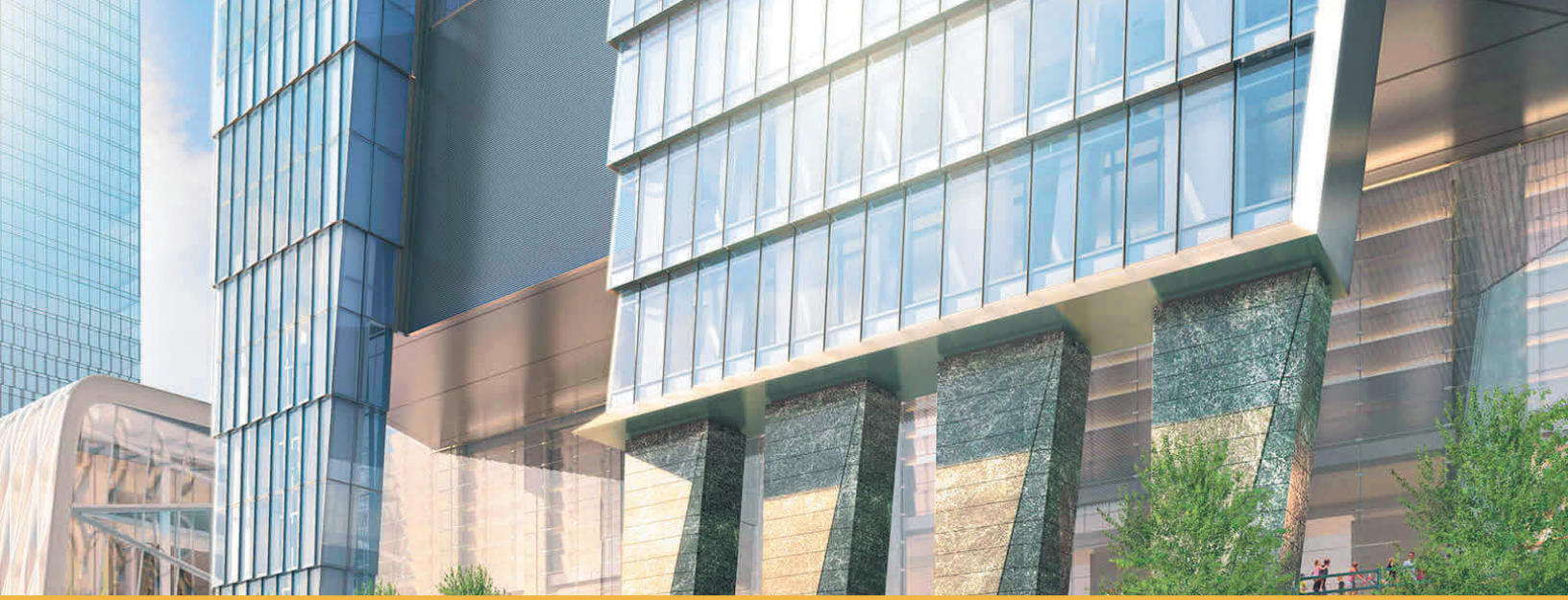
Use transfer-molded, glued or welded corners to improve joint strength, meet aesthetic requirements and ensure material compatibility.

Coatings

Use one of several coating options to solve challenges such as abrasion resistance in a cyclical application or reducing friction for ease of assembly or installation.

iDea® Seal Technology

This co-polymer design features a custom or standard EPDM bulb and a rigid plastic base. The result is a seal with excellent compression set that easily slides into a channel and minimizes stretch.



COMMERCIAL & RESIDENTIAL SOLUTIONS

Cooper Standard ISG specializes in both commercial and residential window and door solutions.

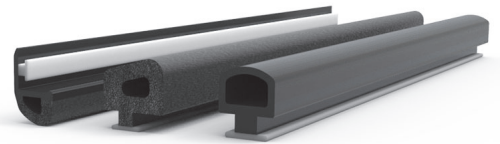
For commercial windows & doors, storefronts and curtain wall systems, we provide custom and standard solutions that perform in demanding environments while satisfying architectural design specifications.

In residential applications, our material knowledge and design expertise produces seals with excellent weatherability, compression set and rebound properties to improve window and door performance.

iDea® Seal

Our iDea Seal is perfect for commercial applications. With a rigid plastic slide-in base, this non-stretch seal will help you speed up production as well as provide superior sealing performance.

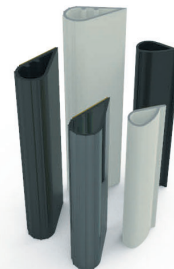
- Energy-efficient EPDM
- Abrasion Resistant
- Excellent Compression Set
- Broad Temperature Range



Fire-rated Silicone Teardrop

Easily install this self-adhesive teardrop profile, which provides an excellent air/smoke seal. Available in various colors.

- UL 10B, UL 10C Classified
- UL Category J Tested



Silicone Setting Block

An 85 +/-5 durometer silicone block is durable, UV resistant and compatible with most sealants.

ASTM C-1115 CH9F

- Job Specific Testing for Compatibility Recommended



Door Sweep

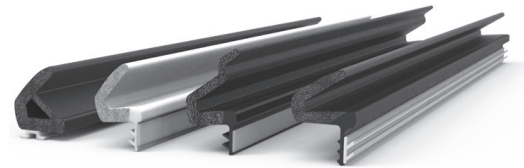
Created for a strong seal against air, moisture and dust in any weather conditions, our door sweep is made from environmentally friendly PVC-FREE materials that are more durable and resistant to tears and cracks.



Door Seals

Standard and extended reach door seals offer a high-performance solution for entry door systems. A dual-durometer EPDM design prevents water wicking while providing UV and weathering resistance.

- AAMA 702 - Replaceable Fenestration Weatherseal Verified, Class A



Coatings

Coatings can improve part installation and reduce noise, wear and abrasion.

Assembly-aid coatings reduce friction during installation processes such as sliding a part into

a channel. Performance coatings provide improved abrasion resistance and coefficient of friction.

High-abrasion coatings are best used to withstand continuous wear and shear.

Molded Corners

For rubber materials, transfer molding can be used to create simple corners or complex frames made up of multiple dissimilar profiles. Molded corners can be installed as a single component, reducing the potential for leaks and improving the efficiency of the assembly process.

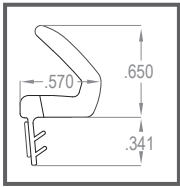


STANDARD PROFILES

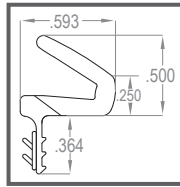
Residential Window & Door Products

In addition to custom extrusion and design, Cooper Standard ISG offers standard profiles suitable for residential applications, including door seals, kerf-mounted seals, slide-ins and universal profiles.

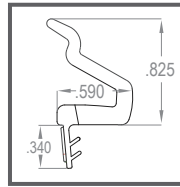
ENTRY DOOR SEALS - EPDM



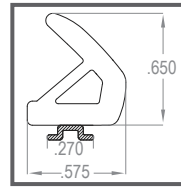
PART No.
1032057-00 (Black)
**More colors available*



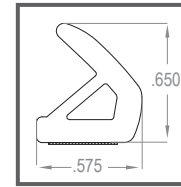
PART No.
1032483-00 (Black)



PART No.
1032292-00 (Black)
**More colors available*



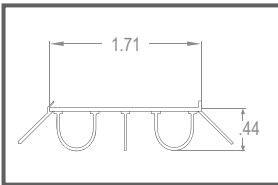
PART No.
1055043-00 (Black)



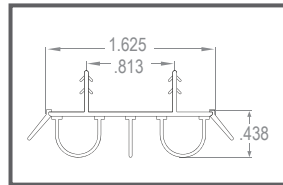
PART No.
1055043-01 (Black)

Entry Door Seals - AAMA 702

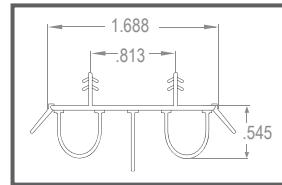
DOOR BOTTOMS & SWEEPS - TPE



PART No.
1040172-XX*
LENGTHS: 32", 36"
COLORS: Brown



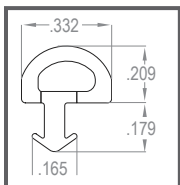
PART No.
1040167-XX*
LENGTHS: 32", 36"
COLORS: Beige & Brown



PART No.
1040199-XX*
LENGTHS: 30", 32", 36"
COLORS: Beige & Brown

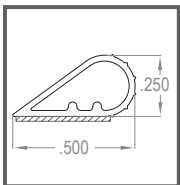
* Part numbers vary by length and color.

KERF-MOUNTED SEALS - EPDM

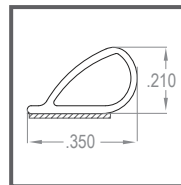


PART No.
1031412-00
DIE: 54647
Sponge & Dense

FIRE-RATED DOOR SEALS - SILICONE



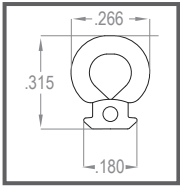
PART No.
1020941-18 (Bronze)
1020941-20 (White)
1020941-21 (Translucent)
1020941-27 (Black)
DIE: 8325



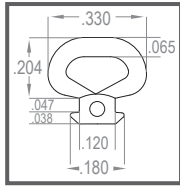
PART No.
1030187-06 (Black)
1030187-07 (White)
1030187-05 (Bronze)
DIE: 8829

Fire-rated door seals are UL certified.

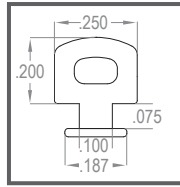
SLIDE-IN / PUSH-IN SEALS



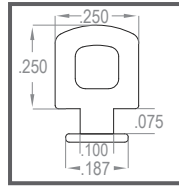
PART No.
1032223-00
DIE: 55322
EPDM Sponge
& Dense



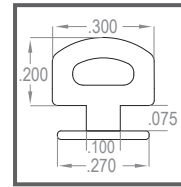
PART No.
1032333-00
DIE: 55461
EPDM Sponge
& Dense



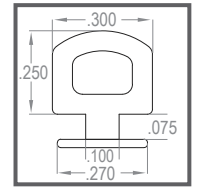
PART No.
1030196-00
DIE: 90019-1
iDea® Seal,*
Sponge EPDM



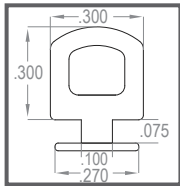
PART No.
1030197-00
DIE: 90020-1
iDea® Seal,*
Sponge EPDM



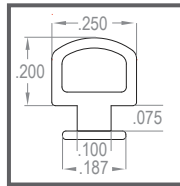
PART No.
1030198-00
DIE: 90021-2
iDea® Seal,*
Sponge EPDM



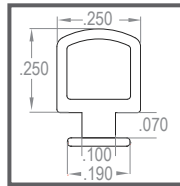
PART No.
1030184-00
DIE: 90022-2
iDea® Seal,*
Sponge EPDM



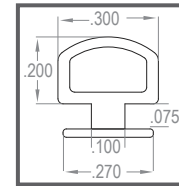
PART No.
1030199-00
DIE: 90023-2
iDea® Seal,*
Sponge EPDM



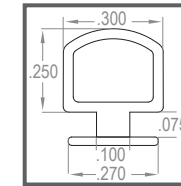
PART No.
1030200-00
DIE: 90024
iDea® Seal,*
Dense EPDM



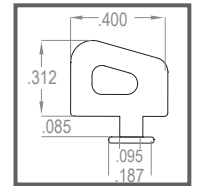
PART No.
1029698-00
DIE: 90025-2
iDea® Seal,*
Dense EPDM



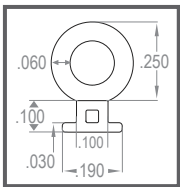
PART No.
1030201-00
DIE: 90026-2
iDea® Seal,*
Dense EPDM



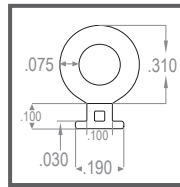
PART No.
1030202-00
DIE: 90027-2
iDea® Seal,*
Dense EPDM



PART No.
1031698-00
DIE: 90079
iDea® Seal,*
Sponge EPDM



PART No.
1032482-00
DIE: 90089
Sponge EPDM
& Rigid Plastic



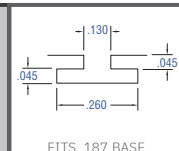
PART No.
1055406-00
DIE: 90090
Sponge EPDM
& Rigid Plastic

METAL RACE

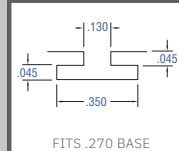
Recommended

Metal Race for ISG's
Standard Sponge & Dense
iDea® Seals.

* Diagrams are not to scale.
* It is highly recommended
that Cooper Standard ISG's
application engineers
review assembly details to
confirm feasibility.



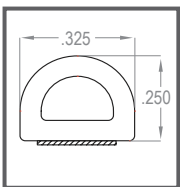
FITS .187 BASE



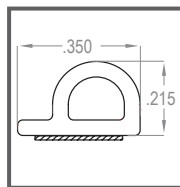
FITS .270 BASE

* iDea® Seal is a co-polymer design featuring a sponge or dense EPDM bulb and a rigid plastic base, which provides a seal with excellent compression set that easily slides into a channel while minimizing stretch.

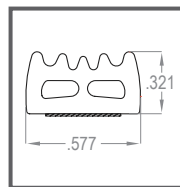
UNIVERSAL PROFILES



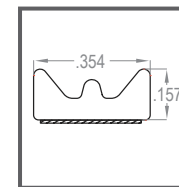
PART No.
1027470-01
(White) 2 cavity
DIE: 52136
Sponge EPDM*



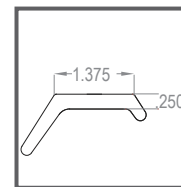
PART No.
1027414-02
(White) 2 cavity
DIE: 52135
Sponge EPDM*



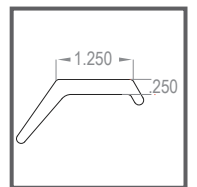
PART No.
1027434-04
(Black)
DIE: 52105
Sponge EPDM*



PART No.
1027456-01 (White)
1027456-02 (Brown)
DIE: 52040
Sponge EPDM*



PART No.
1020511-04
DIE: 1656
Sponge EPDM



PART No.
1027463-02
DIE: 53727
Sponge EPDM

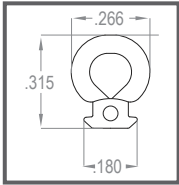
* Parts available in several colors and with lamination.

STANDARD PROFILES

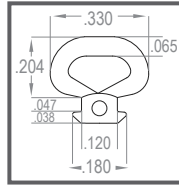
Commercial Building Products

In addition to custom extrusion and design, Cooper Standard ISG offers standard profiles suitable for commercial applications, including commercial glazing seals, fire-rated door seals and setting blocks.

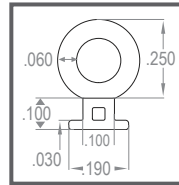
SLIDE-IN / PUSH-IN SEALS



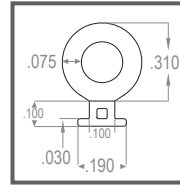
PART No.
1032223-00
DIE: 55322
EPDM Sponge
& Dense



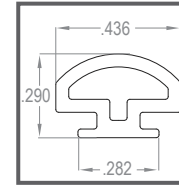
PART No.
1032333-00
DIE: 55461
EPDM Sponge
& Dense



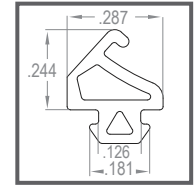
PART No.
1032482-00
DIE: 90089
Sponge EPDM
& Rigid Plastic



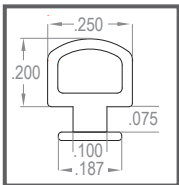
PART No.
1055406-00
DIE: 90090
Sponge EPDM
& Rigid Plastic



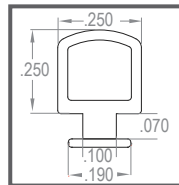
PART No.
1029917-00
DIE: 53173
Dense EPDM



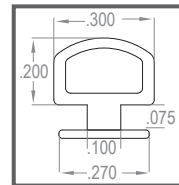
PART No.
1029964-00
DIE: 53248
Dense EPDM



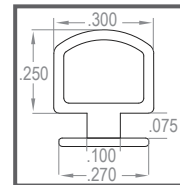
PART No.
1030200-00
DIE: 90024
iDea® Seal,*
Dense EPDM



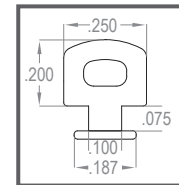
PART No.
1029698-00
DIE: 90025-2
iDea® Seal,*
Dense EPDM



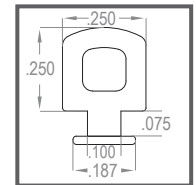
PART No.
1030201-00
DIE: 90026-2
iDea® Seal,*
Dense EPDM



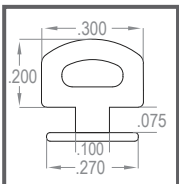
PART No.
1030202-00
DIE: 90027-2
iDea® Seal,*
Dense EPDM



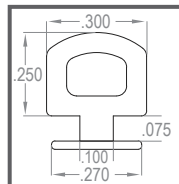
PART No.
1030196-00
DIE: 90019-1
iDea® Seal,*
Sponge EPDM



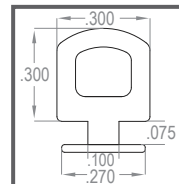
PART No.
1030197-00
DIE: 90020-1
iDea® Seal,*
Sponge EPDM



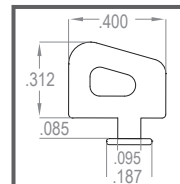
PART No.
1030198-00
DIE: 90021-2
iDea® Seal,*
Sponge EPDM



PART No.
1030184-00
DIE: 90022-2
iDea® Seal,*
Sponge EPDM



PART No.
1030199-00
DIE: 90023-2
iDea® Seal,*
Sponge EPDM

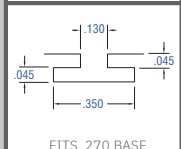
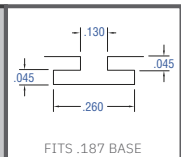


PART No.
1031698-00
DIE: 90079
iDea® Seal,*
Sponge EPDM

METAL RACE

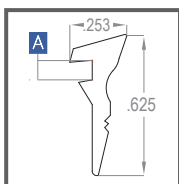
Recommended
Metal Race for ISG's
Standard Sponge & Dense
iDea® Seals.

* Diagrams are not to scale.
* It is highly recommended
that Cooper Standard ISG's
application engineers
review assembly details to
confirm feasibility.

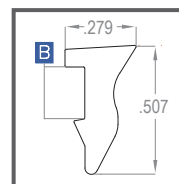


* iDea® Seal is a co-polymer design featuring a sponge or dense EPDM bulb and a rigid plastic base, which provides a seal with excellent compression set that easily slides into a channel while minimizing stretch.

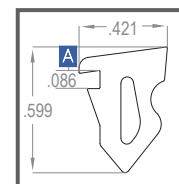
WEDGE GASKETS



PART No.
1029552-00
DIE: 53266
Dense EPDM



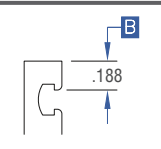
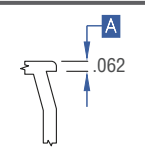
PART No.
1029824-00
DIE: 53329
Dense EPDM



PART No.
1029885-00
DIE: 53377
Dense EPDM

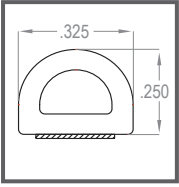
METAL NUB

Recommended
Metal Nub for ISG's
Standard Wedge Gaskets.

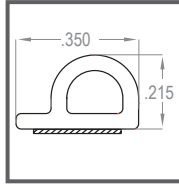


* Diagrams are not to scale.
* It is highly recommended that Cooper Standard ISG's application engineers review assembly details to confirm feasibility.

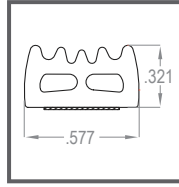
UNIVERSAL PROFILES



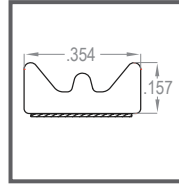
PART No.
1027470-01
(White) 2 cavity
DIE: 52136
Sponge EPDM*



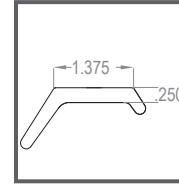
PART No.
1027414-02
(White) 2 cavity
DIE: 52135
Sponge EPDM*



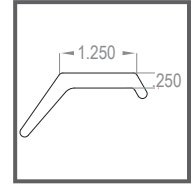
PART No.
1027434-04
(Black)
DIE: 52105
Sponge EPDM*



PART No.
1027456-01 (White)
1027456-02 (Brown)
DIE: 52040
Sponge EPDM*



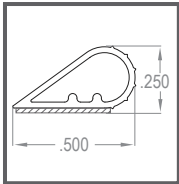
PART No.
1020511-04
DIE: 1656
Sponge EPDM



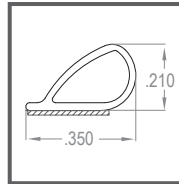
PART No.
1027463-02
DIE: 53727
Sponge EPDM

* Parts available in several colors and with lamination.

FIRE-RATED DOOR SEALS - SILICONE



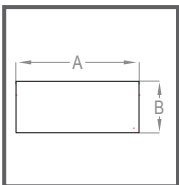
PART No.
1020941-18 (Bronze)
1020941-20 (White)
1020941-21 (Translucent)
1020941-27 (Black)
DIE: 8325



PART No.
1030187-06 (Black)
1030187-07 (White)
1030187-05 (Bronze)
DIE: 8829

Fire-rated door seals are UL certified.

SETTING BLOCKS



MATERIAL: Silicone
COLOR: Black

Certified to ASTM C-1115 CH9F, EPDM materials also available

PART No.	DIE	A	B	CUT LENGTH	PC/CTN
1031250-01	81417	1.125"	0.188"	4"	250
1030409-00	81420	1.125"	0.250"	4"	250
1030365-00	81421	1.000"	0.250"	4"	500
1030366-00	81422	1.000"	0.125"	4"	1,000

North America

+1 800-683-0676
ISG-NorthAmerica@cooperstandard.com

Europe

Technical Rubber - Sheeting & Aviation Flooring
+49 621 480280266
ISG-TechnicalRubber@cooperstandard.com

Asia Pacific

+86 21 80123951
ISG-AsiaPacific@cooperstandard.com



www.cooperstandard-isg.com