

WHAT HAPPENED TO VALUE ENGINEERING?

PROJECT NAME

Embassy Suites – North Lot

LOCATION

Seattle, WA

ARCHITECT

Freiheit & Ho Architects

PANEL LAYOUT

Horizontal Panel Stacked

PANEL SIZE

120" X 22"

WHAT HAPPENED TO VALUE ENGINEERING?

When the concept of value engineering was first conceived in the 1940s, the aim was to find real value through careful analysis of products and components without sacrificing function. Today, value engineering has fallen far from its origins. Many times, products are now chosen simply because they are cheaper, often sacrificing performance and longevity.

With the introduction of the EN-V metal panel system, we aim to restore the true meaning of value. We haven't cheapened anything, but rather optimized the process to find savings without sacrificing performance. EN-V is a tested, architectural, dry joint, pressure equalized rainscreen system, which starts at \$11.95 per square foot for panels; an uncommonly low price in this sector. Now you can use a system you want at the price point you need.

INTRODUCING EN-V: ENGINEERED FOR VALUE

- No sealants, gaskets or butyl tape in the panel joints - which means no dirty streaks or a legacy of maintenance for the building owner.
- Panels are not laminated nor a composite - they will never delaminate.
- Dedicated to developing sustainable products.
- Fully tested to exceed ASTM standards and the latest AAMA 508-07 for pressure equalized rain-screens. Miami Dade approved.
- Interlocking panel design makes installation quick and easy.



**PROJECT NAME**

University of Montana
Missoula College

LOCATION

Missoula, MT

ARCHITECT

StudioForma Architects

PANEL LAYOUT

½ Vertical Joint Stagger

PANEL SIZE

72" X 22"

PANEL LAYOUT OPTIONS

The EN-V Panel System can be installed in a wide variety of layouts without any modifications or additional pieces. Below you will find several examples of what is possible. For other layout configurations, please contact an EN-V representative to discuss the options.



$\frac{1}{4}$ Vertical Joint Stagger



$\frac{1}{4}$ Horizontal Joint Stagger



$\frac{1}{2}$ Vertical Joint Stagger



$\frac{1}{2}$ Horizontal Joint Stagger



Horizontal Panel Stacked



Vertical Panel Stacked

Please check out our installation video at [EN-V.com](https://www.en-v.com).



**PROJECT NAME**

Quincy High School

LOCATION

Quincy, WA

ARCHITECT

NAC Architecture

PANEL LAYOUT

½ Vertical Joint Stagger

PANEL SIZE

72" X 24"



**PROJECT NAME**

Carleton College
Weitz Center

LOCATION

Northfield, MN

ARCHITECT

Meyer, Scherer &
Rockcastle, Ltd.

PANEL LAYOUT

Horizontal Panel Stacked

PANEL SIZE

48" X 22"



PROJECT NAME

University of Dayton
South Patterson Building

LOCATION

Dayton, OH

ARCHITECT

Martz Architects LLC

PANEL LAYOUT

½ Vertical Joint Stagger

PANEL SIZE

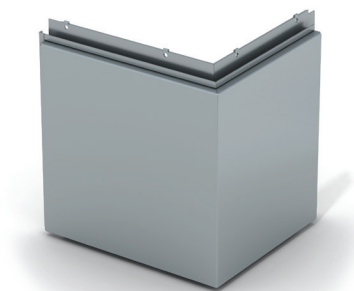
60" X 20"



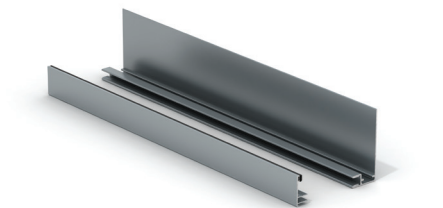
EN-V PANELS & ACCESSORIES



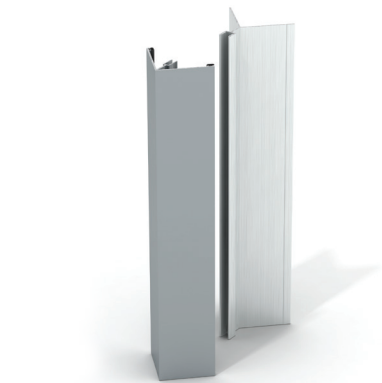
EN-V Panel



Outside Formed Corner



Two Piece J Extrusion



Outside Corner Extrusion

*Contact us at EN-V.com to explore all of our panel accessories.

AVAILABLE SIZES

*dimensions are center line to center line.

A Width x Height	B Width x Height		C Width x Height	
36" x 36"	24" x 48"	72" x 24"	18" x 48"	72" x 18"
72" x 22"	48" x 22"	96" x 22"	30" x 30"	96" x 18"
120" x 22"	60" x 22"	96" x 24"	48" x 24"	96" x 20"
	60" x 24"	120" x 20"	60" x 20"	120" x 18"
	72" x 20"	120" x 24"		

**PROJECT NAME**

Beth Tfiloh

LOCATION

Landover, MD

ARCHITECT

WMCRP Architects

PANEL LAYOUT

½ Horizontal Joint Stagger

PANEL SIZE

24" X 48"

**PROJECT NAME**

Norton Pediatrics

LOCATION

Louisville, KY

ARCHITECT

Laughlin Millea Hillman

PANEL LAYOUT

Horizontal Panel Stacked

PANEL SIZE

48" X 24"



en-v.com

P.O. Box 1286 • Holland, Michigan 49422 • [616] 355-2970

