

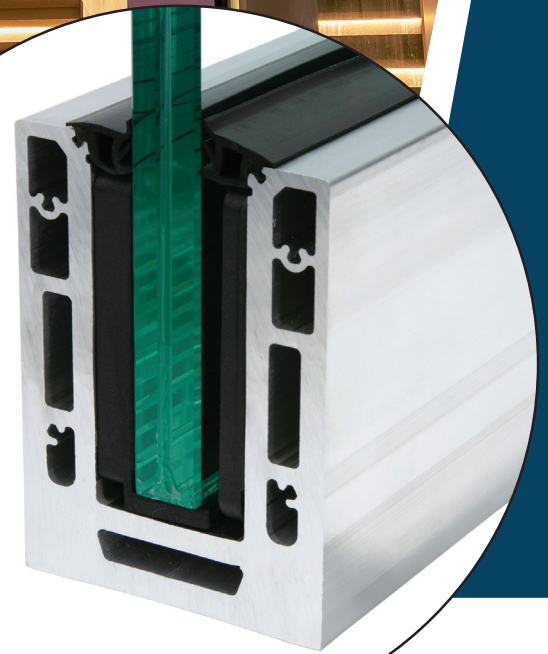
FHC ACHIEVE™

FGR Frameless Glass Railing System

- New Innovation Design, Utilizes Standard 4-1/8" Base Shoe Height
- Designed 40% Lighter Than Traditional Base Shoes
- 10' and 20' Stock Lengths Available Drilled or Undrilled
- Designed for Heavy Glass Railing and Windscreen Applications
- Custom Fabrication Services Available
- FHC Innovative "One Seal" 1SGA Series Gasket Makes Installations Easy. Installers "Can Pre-Load Gasket Before Setting Glass and Use the Same Gasket on the Inside to Finish Installation"

Photo: Zaida Marin of Opulent Glass, Inc.

**NEW
ENGINEERED
DESIGN**
NOW 40% LIGHTER
Multiple Patents Pending



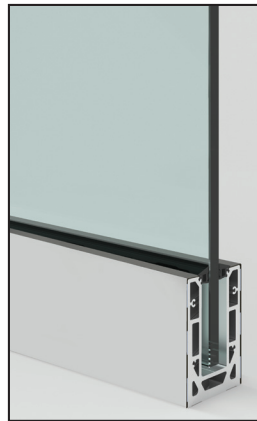
Fast & Easy Installation



Install Base Shoe, Exterior Gasket & Setting Block



Install Glass & Set Shims Using ACH1K Install & Removal Tool Kit



Apply Cladding & Roll-In Interior Gasket to Finish Install

CSI DIVISION 05

SECTION

05 7300

ACHIEVE®
FRAMELESS GLASS RAILINGS

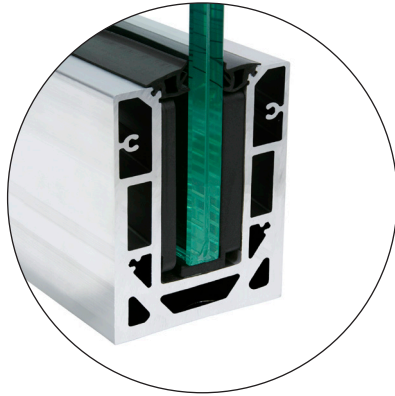
EXPERIENCE AND INNOVATION

4361 Firestone Blvd. South Gate, CA 90280 Toll Free: (888) 295-4531 | Fax: 323 336-8307 | Web: fhc-usa.com

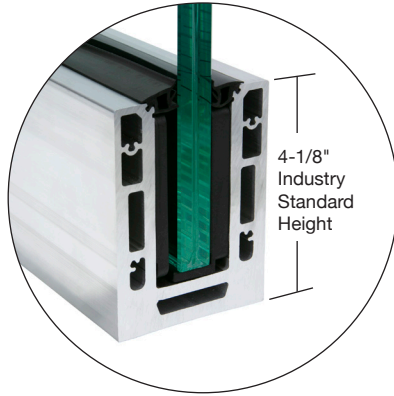
FHC™
FRAMELESS HARDWARE COMPANY
THE GLAZING SUPPLY COMPANY

LIT0151.06.02.21

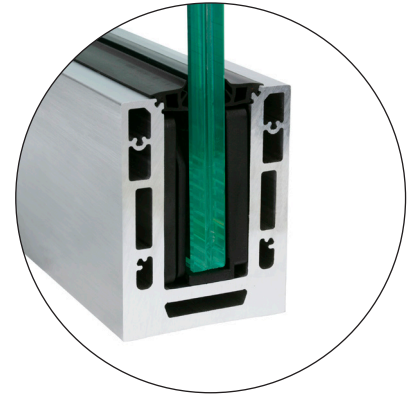
Aluminum Base Shoes



A1M SERIES
1/2" - 9/16" (12 - 13.52 mm)
Glass Railing Base Shoe



A3M SERIES
1 1/16" (17.52 mm)
Glass Railing Base Shoe



A5M SERIES
1 3/16" (21.52 mm)
Glass Railing Base Shoe

Achieve Shims & One Seal Gasket



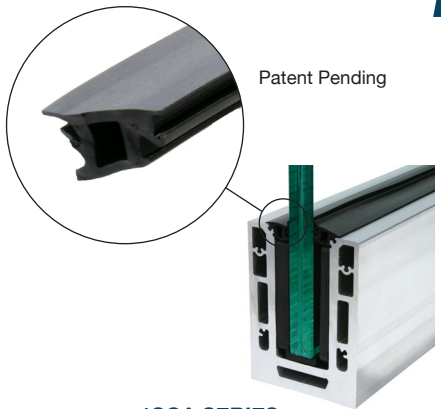
ACH1K
FHC Achieve Installation
and Removal Tool Kit



10 Shim Sets
Per Box

ACH2G
FHC Achieve Glass Rail Shim Set
For 1/2" to 3/4" Glass

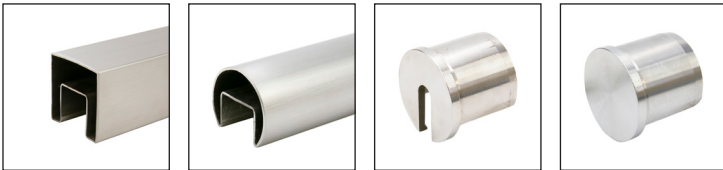
ACH3G
FHC Achieve Glass Rail Shim Set
For 13/16" Glass



Patent Pending

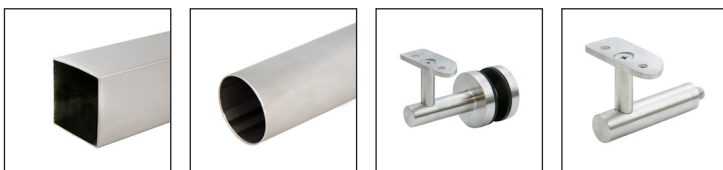
1SGA SERIES
FHC One Seal Base Shoe Gasket
250' and 500' Rolls

Professional Grade Cap Rails & End Caps



Visit FHC-USA.COM for More Options

Professional Grade Hand Rails & Brackets



Visit FHC-USA.COM for More Options

Visit FHC-USA.COM
to See Our Complete
Selection of Architectural
Railing Products



EXPERIENCE AND INNOVATION

4361 Firestone Blvd. South Gate, CA 90280 Toll Free: (888) 295-4531 | Fax: 323 336-8307 | Web: fhc-usa.com



LIT0151.06.02.21